



TXF Online Support for Broker-Specific Data Formats

<http://www.txf-express.com/>

TXF Online 1.3.2

11/30/2008

Overview



Online brokers such as E*Trade Financial, Fidelity Investments, Charles Schwab, Interactive Brokers, Trade King and others do not provide smooth integration with popular tax software programs TaxCut and TurboTax. However these brokers allow their customers to download stock trade data in a broker-specific format, most often in .CSV and MS Excel .XLS formats. TXF Express provides a simple solution for converting trade data from many broker-specific formats to the standard TXF format, which then can be imported into popular tax software programs.

TXF Express also supports two generic trade data formats. If your broker is not in the list of supported brokers, you can first convert trade data to one of the two generic data formats and then generate TXF files.

Do not spend hours or even days doing calculations for your capital gains tax forms. With TXF Express, all you have to do is to upload your trade data file and then download the generated TXF file. With just a few clicks of the mouse, you will be on your way to file tax return. Things have never been easier!

Support for E*Trade

Export E*Trade stock trades into a CSV file:

1. Log into your E*Trade account.
2. Go to "**Trading & Portfolios**".
3. Click on Tab "**Portfolios**".
4. Click on Tab "**Gains & Losses**".
5. Select appropriate year in Box "**Tax Year**" and then click on "**submit**".
6. Click on "**Download**" link next to a green arrow at the top-right of the page.
7. Save the file with extension .csv.

Now you can upload CSV files to generate TXF at <http://www.txf-express.com/>.

Support for Interactive Brokers

Export **Interactive Brokers** stock trades into a **XLS** (MS Excel) file:

1. Log into your Interactive Brokers account.
2. Click on "**Report Management**" on the left panel.
3. Click on "**Tax Forms**" on the left panel.
4. Select "**Schedule D Gain/Loss Summary Worksheet**".
5. Select "**MS Excel**" as the file format.
6. Click on button "**View Report**" to download your trade file.
7. Save the file with extension **.xls** or **.html**.

Now you can upload XLS files to generate TXF at <http://www.txf-express.com/>.

Support for Fidelity Investments

Export **Fidelity** stock trades into a **CSV** file:

1. Log into your Fidelity account.
2. Go to "**Accounts & Trade**" and select "**Portfolio**".
3. Choose one of your Fidelity accounts.
4. Click on the "**History**" on the left panel.
5. Specify the desired time period for the download.
6. Click on the "**Download**" link on the top right of the page.
7. Save the download as **.csv** file.

Now you can upload CSV files to generate TXF at <http://www.txf-express.com/>.

Support for Trade King

Export **Trade King** stock trades into a **CSV** file:

1. Log into your Trade King account.
2. Go to "**Accounts**" and choose "**Download Data**".
3. Select "**Excel**" under "**Choose Format**".
4. Select "**Realized Gain/Loss (Prior Year)**".
5. Click on "**Download**" button.
6. Save the download as **.csv** file.

Now you can upload CSV files to generate TXF at <http://www.txf-express.com/>.

Support for Charles Schwab

Export Charles Schwab stock trades into a XLS file:

1. Log into your Charles Schwab account.
2. Save the file with extension .xls.

Now you can upload XLS files to generate TXF at <http://www.txf-express.com/>.

Support for Generic Trade Data Format 1

If your online broker is not in the list of supported brokers, you can create a spreadsheet file (**XLS**) using MS Excel or a comma delimited text file (**CSV**) using text editors such as NotePad, WordPad and MS Word.

The **XLS** file must be in the format shown below.

Date	Action	Symbol	Quantity	Price	Commission
09/05/2007	Buy	BX	200	22.17	12.99
09/11/2007	Sell	BX	200	22.87	12.99
10/18/2007	Short	YGE	500	31.35	9.99
10/19/2007	Cover	YGE	500	32.45	9.99

The above **XLS** file in MS Excel looks like the following.

The screenshot shows a Microsoft Excel window titled "Microsoft Excel - GenericTrade.xls". The spreadsheet displays the following data:

	A	B	C	D	E	F
1	Date	Action	Symbol	Quantity	Price	Commission
2	9/5/2007	Buy	BX	200	22.17	12.99
3	9/11/2007	Sell	BX	200	22.87	12.99
4	10/18/2007	Short	YGE	500	31.35	9.99
5	10/19/2007	Cover	YGE	500	32.45	9.99
6						
7						

The **CSV** file must be in the format shown below.

```
Date,Action,Symbol,Quantity,Price,Commission
```

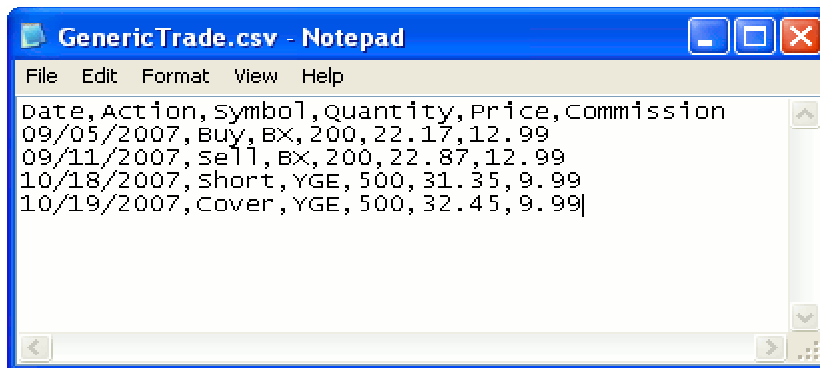
```
09/05/2007,Buy,BX,200,22.17,12.99
```

```
09/11/2007,Sell,BX,200,22.87,12.99
```

```
10/18/2007,Short,YGE,500,31.35,9.99
```

```
10/19/2007,Cover,YGE,500,32.45,9.99
```

The above **CSV** file in NotePad looks like the following.



Now you can upload XLS/CSV files to generate TXF at <http://www.txf-express.com/>.

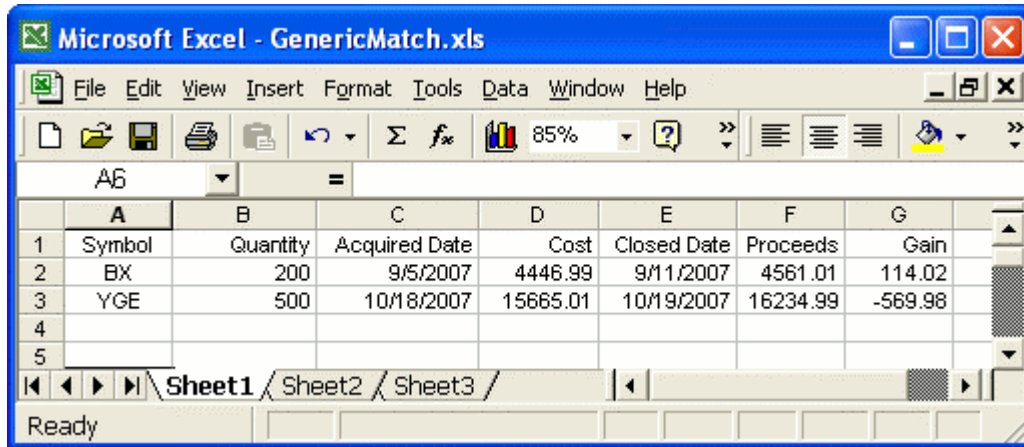
Support for Generic Trade Data Format 2

If your online broker is not in the list of supported brokers, you can create a spreadsheet file (**XLS**) using MS Excel or a comma delimited text file (**CSV**) using text editors such as NotePad, WordPad and MS Word.

The **XLS** file must be in the format shown below.

Symbol	Quantity	Date Acquired	Cost	Date Closed	Proceeds	Gain
BX	200	09/05/2007	4446.99	09/11/2007	4561.01	114.02
YGE	500	10/18/2007	15665.01	10/19/2007	16234.99	-569.98

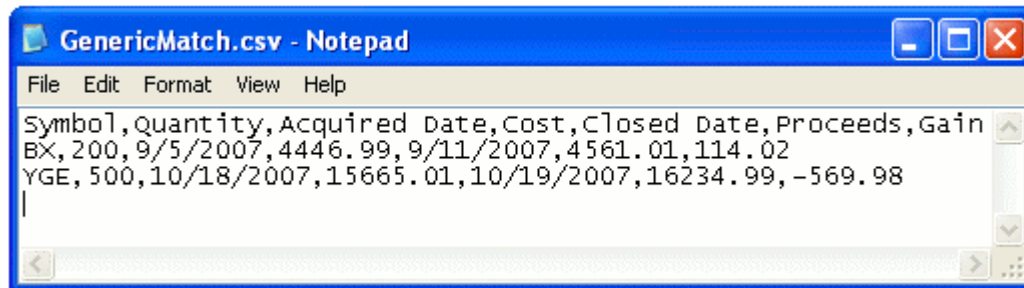
The above **XLS** file in MS Excel looks like the following.



The **CSV** file must be in the format shown below.

```
Symbol,Quantity,Acquired Date,Cost,Closed Date,Proceeds,Gain  
BX,200,09/05/2007,4446.99,09/11/2007,4561.01,114.02  
YGE,500,10/18/2007,15665.01,10/19/2007,16234.99,-569.98
```

The above **CSV** file in NotePad looks like the following.



Now you can upload XLS/CSV files to generate TXF at <http://www.txf-express.com/>.