



# **TXF Creator 1.3.1 Quick Start Guide**

**<http://www.txf-express.com/>**

**© Copyright TXF Express LLC**

**11/30/2008**

## Overview

This document describes how to generate TXF files using **TXF Creator** developed by TXF Express LLC.

If you are interested in getting **TXF Creator**, you can buy and download the software product from <http://www.txf-express.com/software>. The price of **TXF Creator** is as low as \$4.99.

If you have any questions or comments regarding TXF Express products or services, please feel free to contact us at [support@txf-express.com](mailto:support@txf-express.com).

## Step 1 – Choose Data File

Please select the correct tax year and choose broker-specific trade data file. Then click on button "**Continue >>**"

If you encountered errors such as "Please choose a properly formatted data file for broker \*" and "Too many parsing errors", make sure that you have followed the broker-specific instructions correctly.

TXF Creator 1.3.1 - Basic Edition

My Work History Help

Tax Year: 2008

Broker: E\*Trade Financial

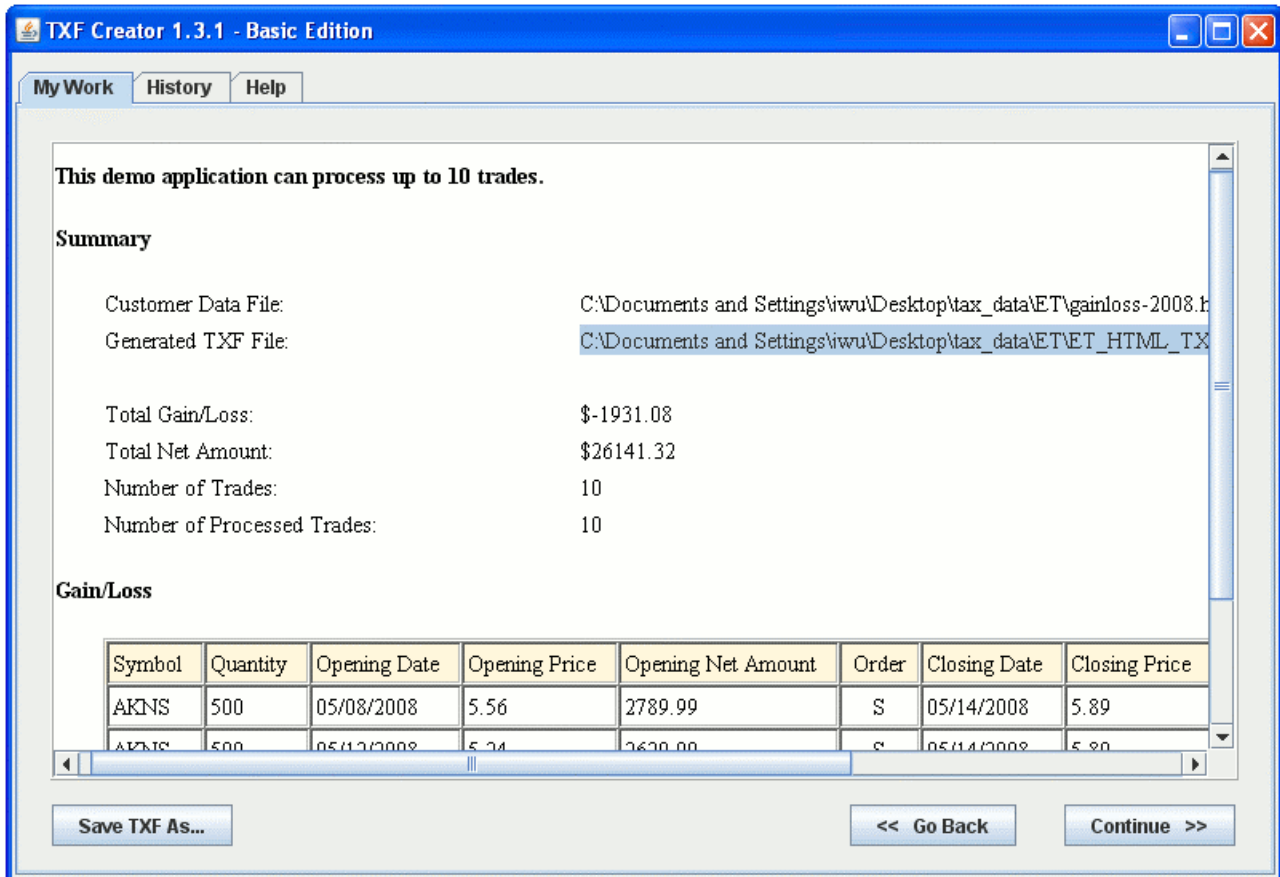
Data File: C:\Documents and Settings\iwul\Desktop\tax\_data\ET\gainloss-2008.html

[Export E\\*Trade stock trades to TXF](#)

1. Log into your [E\\*Trade](#) account.
2. Goto "Trading & Portfolios".
3. Click on Tab "Portfolios".
4. Click on Tab "Gains & Losses".
5. Select appropriate year in Box "Tax Year" and then click on "submit".
6. Click on "Download" link next to a green arrow at the top-right of the page.
7. Save the file with extention .csv.
8. Generate TXF by loading your .csv file under Tab "My Work" in TXFGen.

## Step 2 – Generate TXF File

If you see a screen snapshot like the following, it means that you have successfully generated a TXF file.



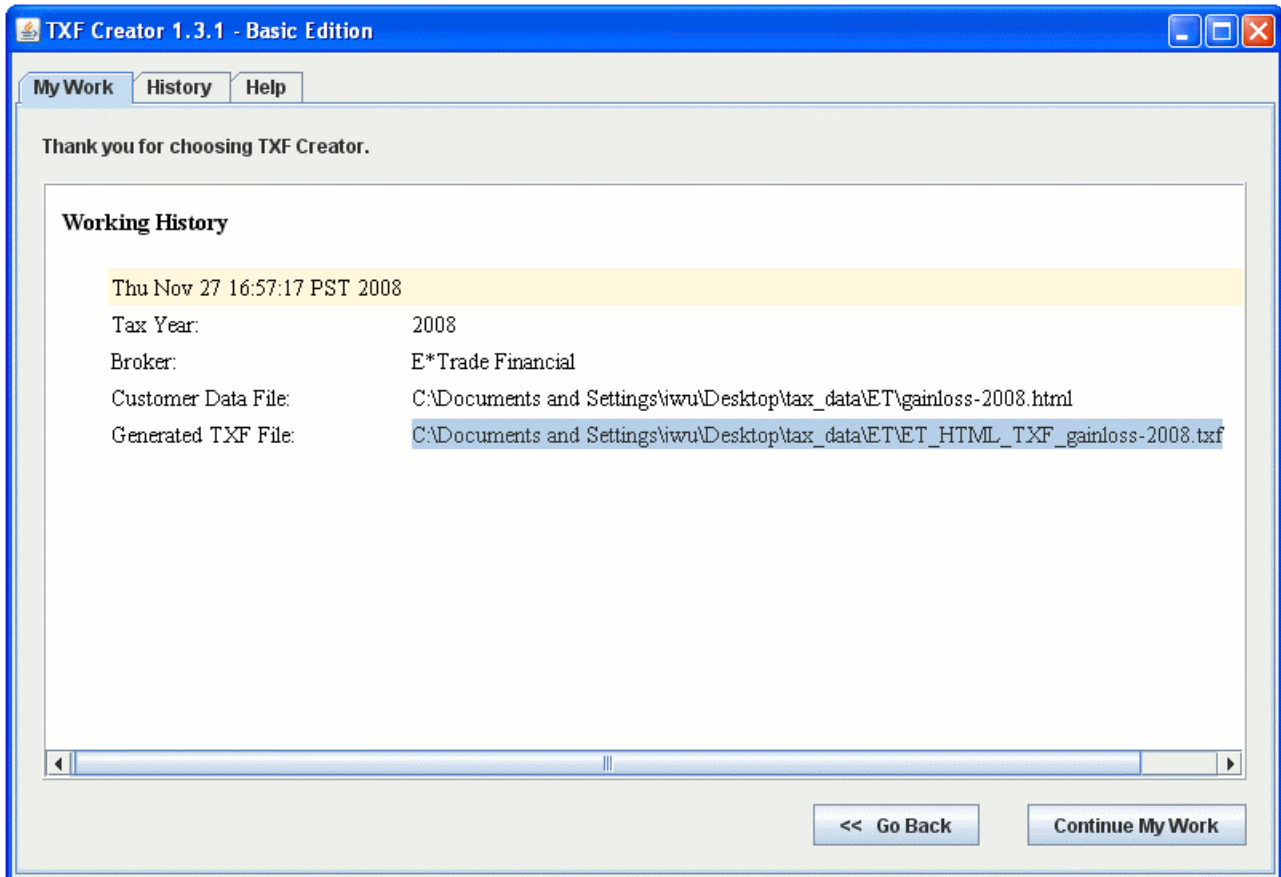
Please verify that TXF Creator has retrieved your trade data correctly. Depending on the edition of software you have bought, there are limitations on the number of trades (i.e., buy or sell) the software can process. For example, if you bought TXF Creator 1.3.1 Standard Edition, you can process no more than 1000 trades per TXF file. However, you can generate as many TXF files as you want if you have more than trade data files downloaded from your brokers.

You can find the generated TXF file by following its complete file path. Or you can click on button "**Save TXF As ...**" to save the current TXF file to any file directory you like.

You can click on button "**Continue >>**" to view your working history.

### Step 3 - View Working History

The working history shows all the TXF files you have created since you started this application.



Click on button "**Continue My Work**" to start another cycle of TXF generation.

### Congratulations

You have successfully generated your TXF file.